

CERTIFICATE OF ANALYSIS

ISO/IEC 17025:2017 ACCREDITATION #103104

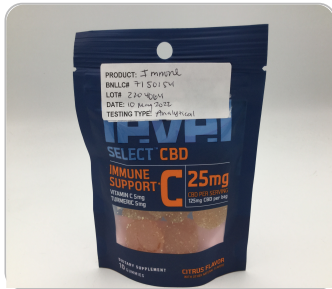


Order #: 94783
Order Name: Level Select
 Immune Support Gummies 10ct
 - 125mg (25mg/serving)
Batch#: 2204064 (7150154)
Received: 05/12/2022
Completed: 05/17/2022

Kadenwood Brands
<https://selectmylevel.com>
info@selectmylevel.com



Sample



Cannabinoid Summary

| | |
|---|--|
| N/D <small>D9-THC</small> | 0.211% <small>Total CBD</small> |
| 25.4 mg <small>Cannabinoids per 2 gummies</small> | 25.4 mg <small>CBD per 2 gummies</small> |

Batch Info

ID:
Date:
Best By Date:
Size:
Total Qty Produced:

Report Download Info

URL: <https://www.verifycbd.com/report/8137z1723f>

12 gummies = 12 grams per 2 gummies x Cannabinoid concentration

Testing Summary

| | | |
|--|---|---|
| Tested <small>Cannabinoids</small> | Pass <small>Pesticide</small> | Tested <small>Terpenes</small> |
| Tested <small>Microbial</small> | Pass <small>Residual Solvents</small> | Pass <small>Mycotoxin</small> |
| Pass <small>Heavy Metals</small> | Tested <small>Water Activity</small> | Pass <small>Filth and Foreign</small> |

| |
|------------|
| D9-THC |
| THCA |
| CBD 0.211% |
| CBDA |
| CBDV |
| CBC |
| CBN |
| CBG |
| CBGA |
| D8-THC |
| THCV |

Instruments

GCMS-MS - Shimadzu GCMS-TQ8040
 LCMS-MS - Shimadzu LCMS-8060
 Headspace GCMS - Shimadzu GCMS QP2020 with HS20
 SHIMADZU INTEGRATED UPLC-PDA
 ICP-MS - Shimadzu ICPMS-2030
 LC-MS - Shimadzu LCMS-8060
 PCR - Agilent AriaMX
 HD-3A Water Activity Meter
 Amscope Simul-Focal Trinocular Stereo Zoom Microscope

SOPS

Cannabinoids Test - GSL SOP 400
 Terpenes Test - GSL SOP 404
 Pesticide Analysis - GSL SOP 401
 Residual Solvents - GSL SOP 405
 Heavy Metals Analysis- GSL SOP 403
 Mycotoxin Analysis - GSL SOP 401
 Microbial Analysis - GSL SOP 406
 Water Activity - GSL SOP 407
 Filth and Foreign Materials Analysis - GSL SOP 409

Diana Asensio, M.S.,
 Lab Director

Green Scientific Labs
info@greenscientificlabs.com
 1-833 TEST-CBD



This COA is governed by the terms and conditions listed on: <https://www.greenscientificlabs.com/terms-of-use.php>

CERTIFICATE OF ANALYSIS

ISO/IEC 17025:2017 ACCREDITATION #103104

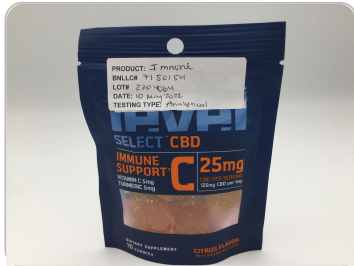


Order #: 94783
 Order Name: Level Select
 Immune Support Gummies 10ct
 - 125mg (25mg/serving)
 Batch#: 2204064 (7150154)
 Received: 05/12/2022
 Completed: 05/17/2022

Kadenwood Brands
<https://selectmylevel.com>
info@selectmylevel.com



Sample



N/D
Total D9-THC

0.211%
Total CBD

25.4 mg
Cannabinoids per
2 gummies

25.4 mg
CBD per
2 gummies

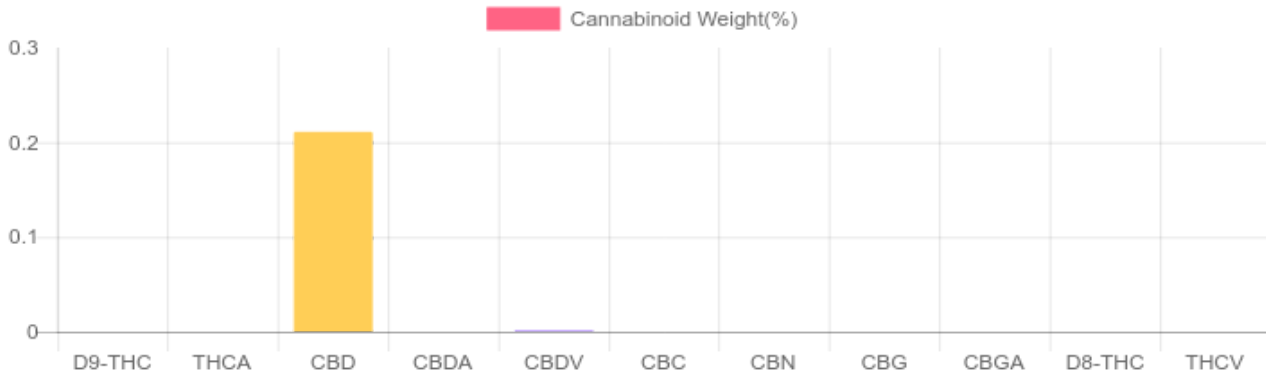
Cannabinoids Test

HPLC-DAD
 GSL SOP 400

UPLOADED: 05/18/2022 15:09:42

| Cannabinoids | LOQ(mg/g) | LOD(mg/g) | weight(%) | mg/g | mg/2 gummies |
|--------------------|-----------|-----------|---------------|--------------|---------------|
| D9-THC | 0.1954 | 0.0645 | N/D | N/D | N/D |
| THCA | 0.1954 | 0.0645 | N/D | N/D | N/D |
| CBD | 0.1954 | 0.0645 | 0.211% | 2.113 | 25.356 |
| CBDA | 0.1954 | 0.0645 | N/D | N/D | N/D |
| CBDV | 0.1954 | 0.0645 | N/D | N/D | N/D |
| CBC | 0.1954 | 0.0645 | N/D | N/D | N/D |
| CBN | 0.1954 | 0.0645 | N/D | N/D | N/D |
| CBG | 0.1954 | 0.0645 | N/D | N/D | N/D |
| CBGA | 0.1954 | 0.0645 | N/D | N/D | N/D |
| D8-THC | 0.1954 | 0.0645 | N/D | N/D | N/D |
| THCV | 0.1954 | 0.0645 | N/D | N/D | N/D |
| TOTAL D9-THC | | | N/D | N/D | N/D |
| TOTAL CBD* | | | 0.211% | 2.113 | 25.4 |
| TOTAL CANNABINOIDS | | | 0.211% | 2.113 | 25.4 |

1 2 gummies = 12 grams per 2 gummies x
 Cannabinoid concentration



*Total CBD = CBD + CBDA x 0.877
 N/D - Not Detected, B/LOQ - Below Limit of Quantification

Diana Asensio, M.S.,
 Lab Director

Green Scientific Labs
info@greenscientificlabs.com
 1-833 TEST CBD



This COA is governed by the terms and conditions listed on: <https://www.greenscientificlabs.com/terms-of-use.php>

CERTIFICATE OF ANALYSIS

ISO/IEC 17025:2017 ACCREDITATION #103104



Order #: 94783
 Order Name: Level Select
 Immune Support Gummies 10ct
 - 125mg (25mg/serving)
 Batch#: 2204064 (7150154)
 Received: 05/12/2022
 Completed: 05/17/2022

Kadenwood Brands
<https://selectmylevel.com>
info@selectmylevel.com



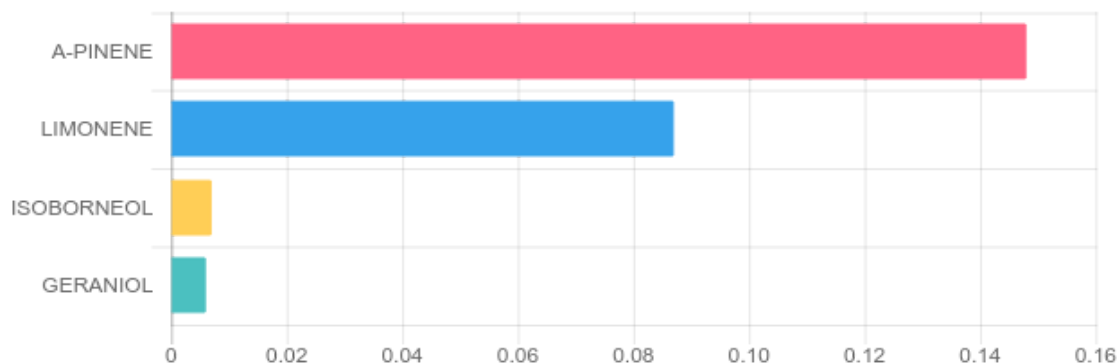
TERPENES: TOTAL (0.248%)

GSL SOP 404
 Uploaded: 05/13/2022 16:17:32

GC-FID

| Terpene | Results (%) | LOQ (%) | LOD (%) | Terpene | Results (%) | LOQ (%) | LOD (%) |
|---------------------------|-------------|---------|---------|----------------------------|-------------|---------|---------|
| 3-CARENE | N/D | 0.003% | 0.001% | GERANIOL | 0.006% | 0.003% | 0.001% |
| A-BISABOLOL | N/D | 0.003% | 0.001% | GERANYL ACETATE | N/D | 0.003% | 0.001% |
| A-CEDRENE | N/D | 0.003% | 0.001% | GUAIOL | N/D | 0.003% | 0.001% |
| A-HUMULENE | N/D | 0.003% | 0.001% | HEXAHYDROTHYMOL | N/D | 0.003% | 0.001% |
| A-PINENE | 0.148% | 0.003% | 0.001% | ISOBORNEOL | 0.007% | 0.003% | 0.001% |
| A-TERPINENE | N/D | 0.003% | 0.001% | ISOPULEGOL | N/D | 0.003% | 0.001% |
| B-MYRCENE | N/D | 0.003% | 0.001% | LIMONENE | 0.087% | 0.003% | 0.001% |
| B-PINENE | N/D | 0.003% | 0.001% | LINALOOL | N/D | 0.003% | 0.001% |
| BORNEOL (MIX OF ISOMERS) | N/D | 0.003% | 0.001% | NEROL | N/D | 0.003% | 0.001% |
| CAMPHENE | N/D | 0.003% | 0.001% | P-MENTHA-1, 5-DIENE | N/D | 0.003% | 0.001% |
| CAMPHOR (MIX OF ISOMERS) | N/D | 0.003% | 0.001% | PULEGONE (+) | N/D | 0.003% | 0.001% |
| CARYOPHYLLENE OXIDE | N/D | 0.003% | 0.001% | SABINENE HYDRATE | N/D | 0.003% | 0.001% |
| CEDROL | N/D | 0.003% | 0.001% | TERPINEOL (MIX OF ISOMERS) | N/D | 0.003% | 0.001% |
| CIS-NEROLIDOL | N/D | 0.003% | 0.001% | TERPINOLENE | N/D | 0.003% | 0.001% |
| CIS-OCIMENE | N/D | 0.003% | 0.001% | TRANS-CARYOPHYLLENE | N/D | 0.003% | 0.001% |
| ENDO-FENCHYL ALCOHOL | N/D | 0.003% | 0.001% | TRANS-NEROLIDOL | N/D | 0.003% | 0.001% |
| EUCALYPTOL | N/D | 0.003% | 0.001% | TRANS-OCIMENE | B/LOQ | 0.003% | 0.001% |
| FENCHONE (MIX OF ISOMERS) | N/D | 0.003% | 0.001% | VALENCENE | N/D | 0.003% | 0.001% |
| GAMMA-TERPINENE | N/D | 0.003% | 0.001% | | | | |

Top Terpenes Results:



Diana Asensio, M.S.,
 Lab Director

Green Scientific Labs
info@greenscientificlabs.com
 1-833 TEST CBD



This COA is governed by the terms and conditions listed on: <https://www.greenscientificlabs.com/terms-of-use.php>

CERTIFICATE OF ANALYSIS

ISO/IEC 17025:2017 ACCREDITATION #103104



Order #: 94783
 Order Name: Level Select
 Immune Support Gummies 10ct
 - 125mg (25mg/serving)
 Batch#: 2204064 (7150154)
 Received: 05/12/2022
 Completed: 05/17/2022

Kadenwood Brands
<https://selectmylevel.com>
info@selectmylevel.com



PESTICIDE ANALYSIS:

GSL SOP 401

UPLOADED: 05/16/2022 10:22:52

GC-MS/MS

| Pesticide | Action Level (ppm) | Results (ppm) | LOQ (ppm) | LOD (ppm) |
|--------------|--------------------|---------------|-----------|-----------|
| CAPTAN | 0.700 | N/D | 0.100 | 0.010 |
| CHLORDANE | 0.100 | N/D | 0.100 | 0.010 |
| CHLORFENAPYR | 0.100 | N/D | 0.100 | 0.010 |
| COUMAPHOS | 0.100 | N/D | 0.100 | 0.010 |

| Pesticide | Action Level (ppm) | Results (ppm) | LOQ (ppm) | LOD (ppm) |
|-------------------------|--------------------|---------------|-----------|-----------|
| CYFLUTHRIN | 2.000 | N/D | 0.100 | 0.010 |
| CYPERMETHRIN | 1.000 | N/D | 0.100 | 0.010 |
| PARATHION-METHYL | 0.100 | N/D | 0.100 | 0.010 |
| PENTACHLORONITROBENZENE | 0.100 | N/D | 0.100 | 0.010 |

LC-MS/MS

| Pesticide | Action Level (ppm) | Results (ppm) | LOQ (ppm) | LOD (ppm) |
|---------------------|--------------------|---------------|-----------|-----------|
| ABAMECTIN B1A | 0.100 | N/D | 0.005 | 0.005 |
| ACEPHATE | 0.100 | N/D | 0.005 | 0.001 |
| ACEQUINOCYL | 0.100 | N/D | 0.005 | 0.005 |
| ACETAMIPRID | 0.100 | N/D | 0.005 | 0.005 |
| ALDICARB | 0.100 | N/D | 0.005 | 0.005 |
| AZOXYSTROBIN | 0.100 | N/D | 0.005 | 0.001 |
| BIFENAZATE | 0.100 | N/D | 0.005 | 0.001 |
| BIFENTHRIN | 3.000 | N/D | 0.005 | 0.005 |
| BOSCALID | 0.100 | N/D | 0.005 | 0.005 |
| CARBARYL | 0.500 | N/D | 0.005 | 0.001 |
| CARBOFURAN | 0.100 | N/D | 0.005 | 0.001 |
| CHLORANTRANILIPROLE | 10.000 | N/D | 0.005 | 0.005 |
| CHLORPYRIFOS | 0.100 | N/D | 0.005 | 0.005 |
| CLOFENTEZINE | 0.100 | N/D | 0.005 | 0.005 |
| DAMINOZIDE | 0.100 | N/D | 0.005 | 0.001 |
| DIAZINON | 0.100 | N/D | 0.005 | 0.005 |
| DICHLORVOS | 0.100 | N/D | 0.005 | 0.001 |
| DIMETHOATE | 0.100 | N/D | 0.005 | 0.001 |
| DIMETHOMORPH | 2.000 | N/D | 0.005 | 0.001 |
| ETHOPROPHOS | 0.100 | N/D | 0.005 | 0.001 |
| ETOFENPROX | 0.100 | N/D | 0.005 | 0.005 |
| ETOXAZOLE | 0.100 | N/D | 0.050 | 0.005 |
| FENHEXAMID | 0.100 | N/D | 0.005 | 0.001 |
| FENOXYCARB | 0.100 | N/D | 0.005 | 0.005 |
| FENPYROXIMATE | 0.100 | N/D | 0.005 | 0.005 |
| FIPRONIL | 0.100 | N/D | 0.005 | 0.005 |
| FLONICAMID | 0.100 | N/D | 0.025 | 0.005 |
| FLUDIOXONIL | 0.100 | N/D | 0.005 | 0.005 |
| HEXYTHIAZOX | 0.100 | N/D | 0.005 | 0.005 |

| Pesticide | Action Level (ppm) | Results (ppm) | LOQ (ppm) | LOD (ppm) |
|-----------------|--------------------|---------------|-----------|-----------|
| IMAZALIL | 0.100 | N/D | 0.005 | 0.001 |
| IMIDACLOPRID | 5.000 | N/D | 0.005 | 0.001 |
| KRESOXIM-METHYL | 0.100 | N/D | 0.005 | 0.005 |
| MALATHION | 0.500 | N/D | 0.005 | 0.001 |
| METALAXYL | 2.000 | N/D | 0.005 | 0.001 |
| METHIOCARB | 0.100 | N/D | 0.005 | 0.001 |
| METHOMYL | 1.000 | N/D | 0.005 | 0.001 |
| MEVINPHOS | 0.100 | N/D | 0.005 | 0.001 |
| MYCLOBUTANIL | 0.100 | N/D | 0.005 | 0.005 |
| NALED | 0.100 | N/D | 0.005 | 0.001 |
| OXAMYL | 0.500 | N/D | 0.005 | 0.001 |
| PACLOBUTRAZOL | 0.100 | N/D | 0.005 | 0.005 |
| PERMETHRINS | 0.500 | N/D | 0.005 | 0.005 |
| PHOSMET | 0.100 | N/D | 0.005 | 0.001 |
| PIPERONYL | 3.000 | N/D | 0.005 | 0.005 |
| BUTOXIDE | 0.100 | N/D | 0.005 | 0.005 |
| PRALLETHRIN | 0.100 | N/D | 0.010 | 0.005 |
| PROPICONAZOLE | 0.100 | N/D | 0.005 | 0.001 |
| PROPOXUR | 0.100 | N/D | 0.005 | 0.005 |
| PYRETHRINS | 0.500 | N/D | 0.005 | 0.005 |
| PYRIDABEN | 0.100 | N/D | 0.005 | 0.005 |
| SPINETORAM | 0.100 | N/D | 0.005 | 0.005 |
| SPINOSAD | 0.100 | N/D | 0.005 | 0.005 |
| SPIROMESIFEN | 0.100 | N/D | 0.005 | 0.001 |
| SPIROTETRAMAT | 0.100 | N/D | 0.005 | 0.005 |
| SPIROXAMINE | 0.100 | N/D | 0.005 | 0.001 |
| TEBUCONAZOLE | 0.100 | N/D | 0.005 | 0.001 |
| THIACLOPRID | 0.100 | N/D | 0.005 | 0.001 |
| THIAMETHOXAM | 5.000 | N/D | 0.005 | 0.001 |
| TRIFLOXYSTROBIN | 0.100 | N/D | 0.005 | 0.005 |

N/D = Not Detected, A/LOQ = Above LOQ Level, B/LOQ = Below LOQ Level, B/LOD = Below LOD Level

Diana Asensio, M.S.,
 Lab Director

Green Scientific Labs
info@greenscientificlabs.com
 1-833 TEST CBD



This COA is governed by the terms and conditions listed on: <https://www.greenscientificlabs.com/terms-of-use.php>

CERTIFICATE OF ANALYSIS

ISO/IEC 17025:2017 ACCREDITATION #103104



Order #: 94783
Order Name: Level Select
 Immune Support Gummies 10ct
 - 125mg (25mg/serving)
Batch#: 2204064 (7150154)
Received: 05/12/2022
Completed: 05/17/2022

Kadenwood Brands
<https://selectmylevel.com>
info@selectmylevel.com



RESIDUAL SOLVENTS:

HS-GC-MS

GSL SOP 405

Uploaded: 05/17/2022 11:50:37

| Residual Solvent | Action Level (ppm) | Results (ppm) | LOQ (ppm) | LOD (ppm) |
|---------------------|--------------------|---------------|-----------|-----------|
| 1,1-DICHLOROETHENE | 8 | N/D | 0.63 | 0.6 |
| 1,2- DICHLOROETHANE | 2 | N/D | 0.12 | 0.012 |
| 1,2-DICHLOROETHENE | 5 | N/D | 0.73 | 0.09 |
| ACETONE | 5,000 | N/D | 140 | 9 |
| ACETONITRILE | 410 | N/D | 25 | 0.72 |
| BENZENE | 1 | N/D | 1 | 0.6 |
| BUTANE | 5,000 | N/D | 50 | 48 |
| CHLOROFORM | 1 | N/D | 1 | 0.5 |
| ETHANOL | 5,000 | 243 | 140 | 12 |
| ETHYL ACETATE | 5,000 | N/D | 140 | 2.4 |
| ETHYL ETHER | 5,000 | N/D | 140 | 6 |
| ETHYLENE OXIDE | 1 | N/D | 2 | 0.6 |
| ISOPROPYL ALCOHOL | 5,000 | B/LOQ | 140 | 3 |
| METHANOL | 3,000 | B/LOQ | 100 | 6 |
| METHYLENE CHLORIDE | 125 | N/D | 1.5 | 1.5 |
| N-HEPTANE | 5,000 | N/D | 140 | 6 |
| N-HEXANE | 290 | N/D | 18 | 0.06 |
| PENTANE | 5,000 | N/D | 140 | 9 |
| PROPANE | 5,000 | N/D | 30 | 30 |
| TOLUENE | 890 | N/D | 53 | 0.9 |
| TRICHLOROETHENE | 1 | N/D | 1 | 0.3 |
| XYLENES | 150 | N/D | 130 | 1.8 |

Diana Asensio, M.S.,
Lab Director

Green Scientific Labs
info@greenscientificlabs.com
 1-833 TEST CBD



This COA is governed by the terms and conditions listed on: <https://www.greenscientificlabs.com/terms-of-use.php>

CERTIFICATE OF ANALYSIS

ISO/IEC 17025:2017 ACCREDITATION #103104



Order #: 94783
 Order Name: Level Select
 Immune Support Gummies 10ct
 - 125mg (25mg/serving)
 Batch#: 2204064 (7150154)
 Received: 05/12/2022
 Completed: 05/17/2022

Kadenwood Brands
<https://selectmylevel.com>
info@selectmylevel.com



Microbial Analysis:

Microbial Analysis GSL SOP 406

Uploaded: 05/14/2022 20:09:45

MICROBIAL ANALYSIS:

| Test | SOP | Test Method | Device Used | Allowable Criteria | Actual Result |
|--------------------------|-----|---------------|-------------|--------------------|----------------|
| TOTAL YEAST AND MOLD | 406 | QPCR | ARIAMX PCR | NOT APPLICABLE | < 1,000 CFU/G |
| AEROBIC BACTERIA COUNT | 406 | QPCR | ARIAMX PCR | NOT APPLICABLE | < 10,000 CFU/G |
| ENTEROBACTERIACEAE | 406 | QPCR | ARIAMX PCR | NOT APPLICABLE | < 100 CFU/G |
| COLIFORM | 406 | QPCR | ARIAMX PCR | NOT APPLICABLE | < 100 CFU/G |
| ASPERGILLUS FUMIGATUS*** | 406 | REAL-TIME PCR | ARIAMX PCR | < 1 CFU/G | NOT DETECTED |
| ASPERGILLUS NIGER*** | 406 | REAL-TIME PCR | ARIAMX PCR | < 1 CFU/G | NOT DETECTED |
| ASPERGILLUS FLAVUS*** | 406 | REAL-TIME PCR | ARIAMX PCR | < 1 CFU/G | NOT DETECTED |
| ASPERGILLUS TERREUS*** | 406 | REAL-TIME PCR | ARIAMX PCR | < 1 CFU/G | NOT DETECTED |
| STEC E. COLI* | 406 | REAL-TIME PCR | ARIAMX PCR | < 1 CFU/G | NOT DETECTED |
| SALMONELLA* | 406 | REAL-TIME PCR | ARIAMX PCR | < 1 CFU/G | NOT DETECTED |

† USP 61 (enumeration of bacteria TAC, TYM, and ENT/Coliform), USP 62 (identifying specific species E.coli Aspergillus etc)

* STEC and Salmonella run as Multiplex

** CFU/g Calculation based on MIP/Extract matrix

*** Flavus = 2 Copies of DNA / Fumigatis = 2 Copies of DNA Niger = 20 Copies of DNA / Terrus = 10 copies of DNA

Diana Asensio, M.S.,
 Lab Director

Green Scientific Labs
info@greenscientificlabs.com
 1-833 TEST CBD



This COA is governed by the terms and conditions listed on: <https://www.greenscientificlabs.com/terms-of-use.php>

CERTIFICATE OF ANALYSIS

ISO/IEC 17025:2017 ACCREDITATION #103104



Order #: 94783
Order Name: Level Select
Immune Support Gummies 10ct
- 125mg (25mg/serving)
Batch#: 2204064 (7150154)
Received: 05/12/2022
Completed: 05/17/2022

Kadenwood Brands
<https://selectmylevel.com>
info@selectmylevel.com



Mycotoxin Analysis:

LC-MS/MS
GSL SOP 401

Uploaded: 05/16/2022 10:22:52

| Analyte | LOQ (ppb) | LOD (ppb) | Action Lvl (ppb) | Results (ppb) |
|--------------|-----------|-----------|------------------|---------------|
| AFLATOXIN B1 | 1 | 1 | 20 | N/D |
| AFLATOXIN B2 | 1 | 1 | 20 | N/D |
| AFLATOXIN G1 | 1 | 1 | 20 | N/D |
| AFLATOXIN G2 | 1 | 1 | 20 | N/D |
| OCHRATOXIN A | 1 | 1 | 20 | N/D |

Heavy Metals Analysis:

ICP-MS
GSL SOP 403

Uploaded: 05/13/2022 16:39:09

| Metal | LOQ (ppb) | LOD (ppb) | Action Level (ppb) | Result (ppb) |
|--------------|-----------|-----------|--------------------|--------------|
| ARSENIC (AS) | 75 | 20 | 200 | N/D |
| CADMIUM (CD) | 75 | 20 | 200 | N/D |
| MERCURY (HG) | 75 | 20 | 100 | N/D |
| LEAD (PB) | 75 | 20 | 500 | N/D |

Moisture Analysis:

Shimadzu MOC63U Moisture Balance - GSL SOP 411

Uploaded: 05/12/2022 22:57:27

Moisture %

2.1%

Water Activity:

Water Activity Meter

Uploaded: 05/12/2022 22:57:28

Water

0.59

Filth and Foreign Materials Analysis:

Microscope - Amscope Simul-Focal Trinocular Stereo Zoom Microscope - GSL SOP 409

Uploaded: 05/12/2022 22:35:49

Pass: No Foreign Materials Detected

Diana Asensio, M.S.,
Lab Director

Green Scientific Labs
info@greenscientificlabs.com
1-833 TEST CBD

